

Analysis of 43 food additives (2)

On the Analysis of 43 food additives (1) (No. 620013H), the simultaneous analysis and the selective detection of each component with a photo diode array detector and a fluorescence detector were introduced. This report shows further applications into actual food samples.

Fig. 1 and Fig.2 show the chromatograms of energy drinks. The sample was filtered with 0.45 μ m of membrane-filter and injected. Vitamins and preservatives were selectively detected at each wavelength.

Keywords: 1.Food additives, 2.Drink, 3.ODS, 4.PDA,, 5.FL

Conditions:

Column: CrestPak C18T-5
 Eluent : A:0.3% H_3PO_4
 B: CH_3CN

Time(min)	0	20	40	50	50.1
A(%)	95	75	20	20	95
B(%)	5	25	80	80	5
		1cycle	65min		

Wavelength range: 200-650nm (MD-910)
 Wavelength program: Fig.1 (FP-920)
 Flow rate: 1.0ml/min
 Column temperature: 40 degree celsius
 Injection volume: 10ul
 Sample: Drink

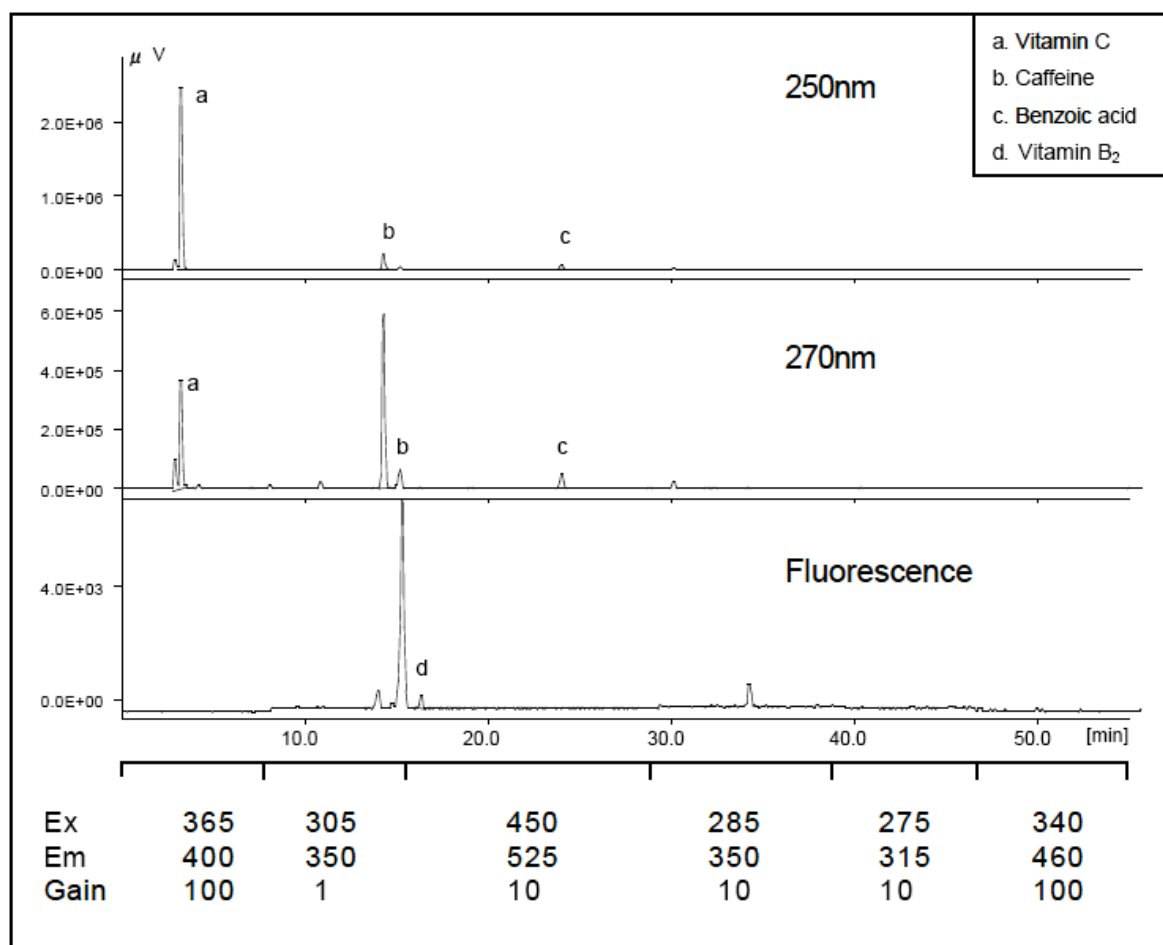


Fig. 1 Chromatograms of energy drink A

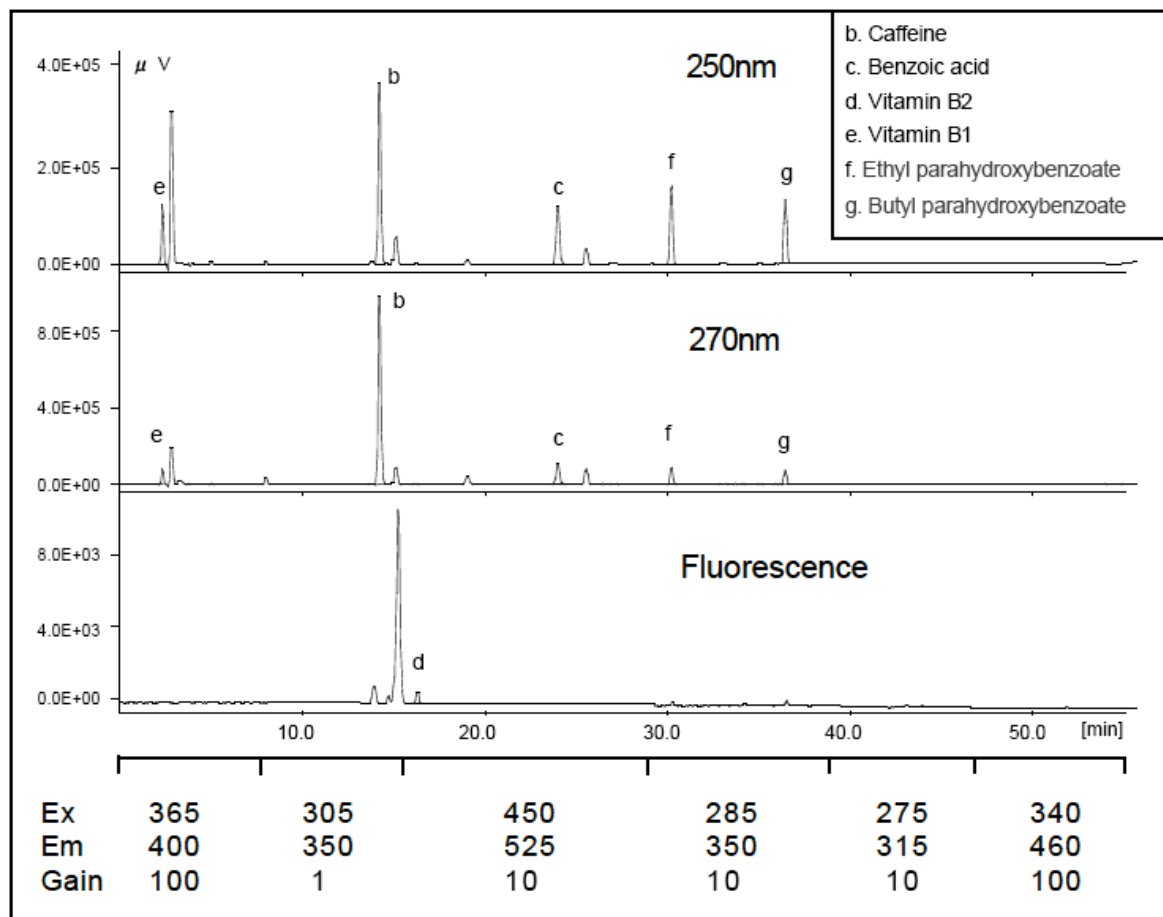


Fig. 2 Chromatograms of energy drink B